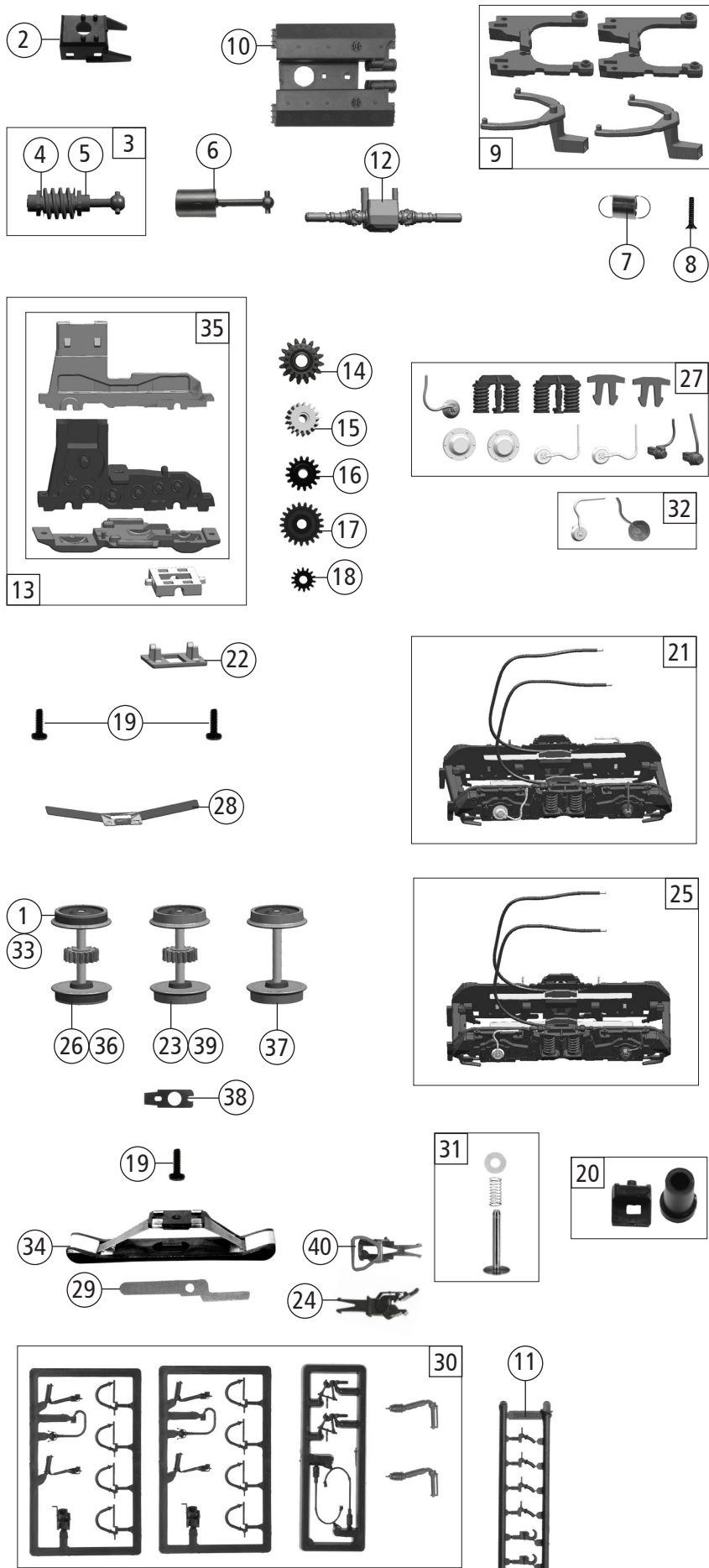


| Pos. Nr. Pos.no. | Beschreibung Description | Art.-Nr. Art.no. | Preisgruppe Price bracket |
|---------------------|--|---------------------|------------------------------|
| 424005 | DB-AG BR 215 | = | |
| 424075 | | = | 🔊 |
| 394075 | | ~ | 🔊 |
| 1 | Gehäuse kpl. Betr.nr. 424005 Body ass. loco no. 424005 | 10424005 | 33 |
| 2 | Dachaufsatz, Abgasschacht satz Roof superstructure, exhaust line set | 19496300 | 14 |
| 3 | Kühlergrill, Zugfunkantenne -satz Radiator grille, train radio aerial set | 19475400 | 7 |
| 4 | TS-Fenster Part set window | 14424001 | 9 |
| 5 | TS-Lichtleiter Part set light conductor | 13424001 | 8 |
| 6 | Scheibenwischersatz Windscreen wiper set | 19508100 | 9 |
| 7 | Puffer rund gewölbt Buffer round curved | 75406900 | 5 |
| 8 | Führerstand Driver's cab | 12424001 | 10 |
| 9 | Lokführer Loco driver | 154240012 | 9 |
| 10 | UIC-Dose UIC-socket | 19508600 | 3 |
| 11 | Griffstangen, Handgriff - satz Part set handrail, handle set | 19510600 | 10 |
| 12 | Umlauf-satz Running board set | 154240021 | 15 |
| 13 | Inneneinrichtung Interior fittings | 15424001 | 7 |
| 14 | GF-Schraube M1,6x5 Self-tapping screw M1,6x5 | 70900013 | 1 |
| 15 | TS-Treppe, Handrad, Kabel Part set treadle, handwheel, cable | 19508400 | 9 |
| 16 | Zugheizkupplung, Zugheizdose satz Heating coupling, heating socket set | 19508500 | 9 |
| 17 | Motor Motor | 50424001 | 28 |
| 18 | Kontaktfeder Contact spring | 61481300 | 4 |
| 19 | Kardanschale kurz 1,5 mm Cardan reception, short 1,5 mm | 56450300 | 4 |
| 20 | Grundrahmen Basic frame | 11424002 | 20 |
| 21 | Lichtabdeckungssatz Light cover set | 45424001 | 6 |
| 22 | Leiterplatte kpl. PCB ass. | 65419600 | 22 |
| 23 | Brückenstecker Connector | 66401500 | 17 |
| 24 | Türgriffstange satz Door handle set | 19508000 | 13 |
| 25 | Puffertritt-Satz Buffer treadle set | 19508300 | 6 |
| 26 | Kohle Coal | 00686508 | 6 |
| 27 | Bürstenfeder Brush spring | 006865081 | 3 |
| Sound | | | |
| 28 | Leiterplatte kpl. PCB ass. | 65419700 | 25 |
| 29 | Lautsprecher Loudspeaker | 68400400 | 16 |
| 30 | Sounddecoder Sound-decoder | 68424075 | 33 |

Änderungen in Konstruktion und Ausführung vorbehalten
We reserve the right to change the construction and specification



| Pos. Nr. Pos.no. | Beschreibung Description | Art.-Nr. Art.no. | Preisgruppe Price bracket |
|--------------------------|--|---------------------|------------------------------|
| 424005 | DB-AG BR 215 | = | |
| 424075 | | = | 🔊 |
| 394075 | | ~ | 🔊 |
| 1 | Haftringsatz 10,3-12,8mm 10Stk. Set with traction tyres 10pieces | 54401300 | 1 |
| 2 | Schneckendeckel Worm gear cover | 56462100 | 5 |
| 3 | Schneckensatz mit Kardankugel Set of worm gear incl.cardan ball | 56462200 | 14 |
| 4 | Beilagscheibe Washer | 56470800 | 3 |
| 5 | Lager für Schneckenachse Bearing for worm gear axle | 56462000 | 6 |
| 6 | Kardanwelle L=20 mm Cardan shaft L=20 mm | 56450800 | 6 |
| 7 | Zugfeder Draw spring | 76411900 | 2 |
| 8 | SK-Schraube M1,6x7 mm SK-Screw M1,6x7 mm | 70900039 | 2 |
| 9 | Deichsel und Kulissee Rod and slotted guide | 38405600 | 7 |
| 10 | Dieseltank Diesel tank | 19510500 | 13 |
| 11 | Attrappenrahmen klein Small dummy frame | 19501100 | 4 |
| 12 | Kardanwellenattrappe Cardan shaft dummy | 56451000 | 3 |
| 13 | Getriebesatz Gear set | 41424002 | 18 |
| 14 | Schneckenrad doppel Worm gear wheel double | 56461700 | 6 |
| 15 | Zahnrad Z=17 Gear wheel Z=17 | 56420500 | 4 |
| 16 | Zahnrad Z=16 Gear wheel Z=16 | 56420600 | 4 |
| 17 | Zahnrad Z=21 G/M=0,4 Gear wheel Z=21 G/M=0,4 | 56419600 | 3 |
| 18 | Zahnrad Z=14 M=0,4 mm Gear wheel Z=14 M=0,4 mm | 56420700 | 4 |
| 19 | GF-Schraube M1,6x5 Self-tapping screw M1,6x5 | 70900013 | 1 |
| 20 | Kontaktaltersatz Contact support set | 18424001 | 3 |
| 21 | Drehgestellrahmen 1 vormont. Bogie framework 1 pre-mounted | 31424005 | 16 |
| 22 | Achslagerdeckel Axle bearing cover | 53491700 | 5 |
| 23 | Radsatz m. Zahnrad o. Haftring Wheelset w. gear wheel w/o traction tyre | 53435900 | 11 |
| 24 | Profi-Steckkupplung Profi clip-in coupling | 00686515 | 6 |
| 25 | Drehgestellrahmen 2 vormont. Bogie framework 2 pre-mounted | 314240021 | 16 |
| 26 | Radsatz m. Zahnrad m.2 Haftringe Wheelset w. gear wheel w. 2traction tyres | 53436000 | 14 |
| 27 | Blendensteckteile Cover plug-in parts | 19424002 | 7 |
| 28 | Radkontakt Wheel contact | 61499200 | 6 |
| 29 | Kontakt für Schaltpilz Contact for switch pin | 61424001 | 11 |
| 30 | Zurüstbeutel Bag with accessories | 19424005 | 13 |
| 31 | Kontaktpilzgarnitur Contacter pin assembly | 00644415 | 9 |
| 32 | Achslager-satz Axle bearing set | 53491900 | 18 |
| AC - Wechselstrom | | | |
| 33 | Haftringsatz 10,3-12,4mm 10Stk. Set with traction tyres 10pieces | 54401400 | 1 |
| 34 | Schleifer 42mm Center pick-up | 69203000 | 14 |
| 35 | Getriebesatz Gear set | 41394072 | 18 |
| 36 | Radsatz m. 2Haftringe m. Zahnrad AC Wheelset w. 2tract.tyres w. gear wheel AC | 53435600 | 14 |
| 37 | Radsatz o. Zahnrad o. Haftring AC Wheelset w/o gear w/o traction tyres AC | 53435700 | 11 |
| 38 | Schleiferauflagekontakt Pick-up contact plate | 62100900 | 7 |
| 39 | Radsatz m. Zahnrad o. Haftring AC Wheelset w. gear wheel w/o tract. tyre AC | 53435800 | 14 |
| 40 | Steck-Tauschkupplung Clip-in coupling | 6511 | --- |

Ersatzteile erhalten Sie direkt unter www.fleischmann.de, bei Ihrem Fachhändler, oder Ihrer Landesvertretung.
Spare parts can be ordered directly at www.fleischmann.de and from your local dealer or country representative.